



Product designation	Switch disconnecter with fuse		
Product type designation	GM		
Type of fuse	J		
Number of poles	Nr.	3	
Operating voltage type	AC		
Contact characteristics			
IEC Conventional free air thermal current I <sub>th</sub>	A	63	
Rated insulation voltage U <sub>i</sub> IEC/EN	V	1000	
Rated impulse withstand voltage U <sub>imp</sub>	kV	12	
Operating current I <sub>e</sub>			
AC21A			
	400V	A	63
	500V	A	63
	690V	A	63
AC22A			
	400V	A	63
	500V	A	32
	690V	A	32
AC23A			
	400V	A	63
	500V	A	63
	690V	A	63
Power dissipation per pole max	W	4	
Power dissipation per pole without fuse	W	4	
Max fuse power dissipation			
	in open air	W	7.5
	in enclosure	W	7.5
Rated operational power AC23A			
	690V	kW	55
Rated short time current (1s) I <sub>cs</sub> (rms)	kA	2.5	
Short-circuit protection with fuse	Class/A	J/60	
Making capacity AC23A 400V	A	630	
Breaking capacity AC23A 400V	A	504	
Mechanical life	cycles	10000	
Electrical life AC21A	cycles	6000	
Mechanical features			
Operating position	normal allowable	Vertical plan Any	
Fixing		Screw	
Terminals			
	type	Built-in terminal lug	

Tightening torque for terminals

max	Nm	3.5
max	lbin	2.5

Conductor section

IEC min	mm <sup>2</sup>	2.5
IEC max	mm <sup>2</sup>	25
AWG/kcmil min		14
AWG/kcmil max		4

UL technical data

UL Standard		UL98
-------------	--	------

General purpose current rating	A	60
--------------------------------	---	----

Operating voltage max	V	600
-----------------------	---	-----

Horsepower/FLA current three phase motor

240V	HP	15/42
480V	HP	30/40
600V	HP	50/52

Short circuit rating	kA rms	200
----------------------	--------	-----

Short circuit rating with fuse	Class/A	J/60
--------------------------------	---------	------

Ambient conditions

Operating temperature

min	°C	-25
max	°C	55

Storage temperature

min	°C	-40
max	°C	70

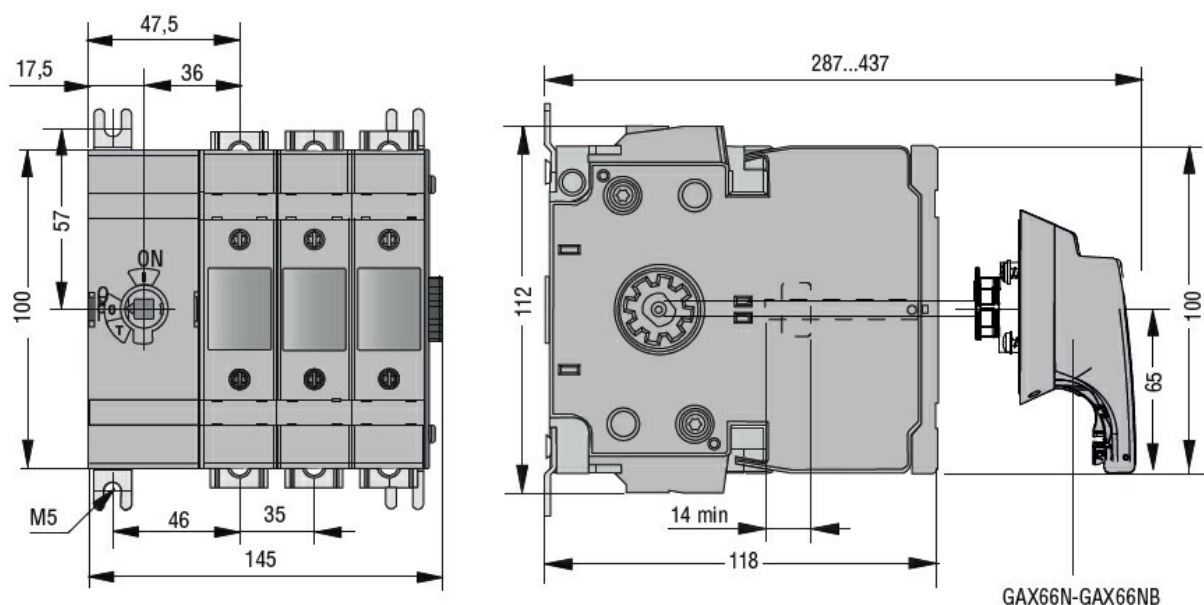
Max altitude	m	3000
--------------	---	------

Resistance & Protection

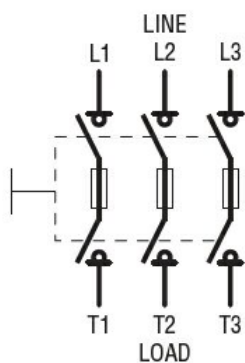
Frontal IP degree	IP20
-------------------	------

Pollution degree	3
------------------	---

Dimensions



Wiring diagrams



## Certifications and compliance

### Compliance

IEC/EN 60947-1

IEC/EN 60947-3

### Certifications

cULus according to UL98/CSA C22.2 n°4

## ETIM classification

ETIM 8.0

EC000216 -  
Switch  
disconnecter